



STV Corporation

Excellent Fluid Control Solutions Provider



目录 Contents

01 Company Overview

03 Product Application

02 Production & Process

04 Sales Network & Customers



01 Company Overview

1.1 Overview



Headquarters

- Council President of China Valve Association
- Stock code: 002438



Founded

1966



Location

Nantong, China



Main Products

Industrial Valves
Ball, Butterfly, GGC, etc.



Employee

1,500+



Land Area

300,000 m²



Revenue 2024

2.1 billion RMB



Plant 1
1966

Land area: 26,600 sq.ms
Accessories & Spare parts



Plant 2
2011

Land area: 89,900 sq.ms
Nuclear valve & Equipment



Plant 3
2016

Land area: 114,500 sq.ms
Metallurgical & Energy valve



Industrial Park (Phase I)
2025

Land area: 37,600 sq.ms

1.2 Timeline

1966



Nanyang Agriculture Machine Factory

1970



Qidong Valve Factory
Produce ball valve,
butterfly valve

1982

1st batch members of
China Valve
Association

1988

1st batch members of
Baosteel Spare Parts
Joint R&D Center

2001

Jiangsu Shentong
Valve Co., Ltd. was
established

2006



Plant 2 completed

2009

1st batch members of
CGN Nuclear Power
Equipment Localization
Joint R&D Center

2010



Listed at Shenzhen
Stock Exchange

2015



Acquisition of
Wuxi Flange Plant

2016



Plant 3 completed

2017

Acquisition of Ruifan
Energy-Saving Tech

2019



Invested and established
STech
Produce hydrogen valve

STECH
ENERGY

2021



Elected as council
president of China Valve
Association

2022



New headquarters
completed
Established Overseas
Trade Dept.



STS
TECHNOLOGY

Shentong Semi was
founded
head to semiconductor
valve market

2024



Honored as
Champion
Enterprise in
Manufacturing
by MIIT

2025



Shentong
Industrial Park

1966 ~ 1980

Early Phase

1980 ~ 2000

Growth Phase

2000 ~ 2010

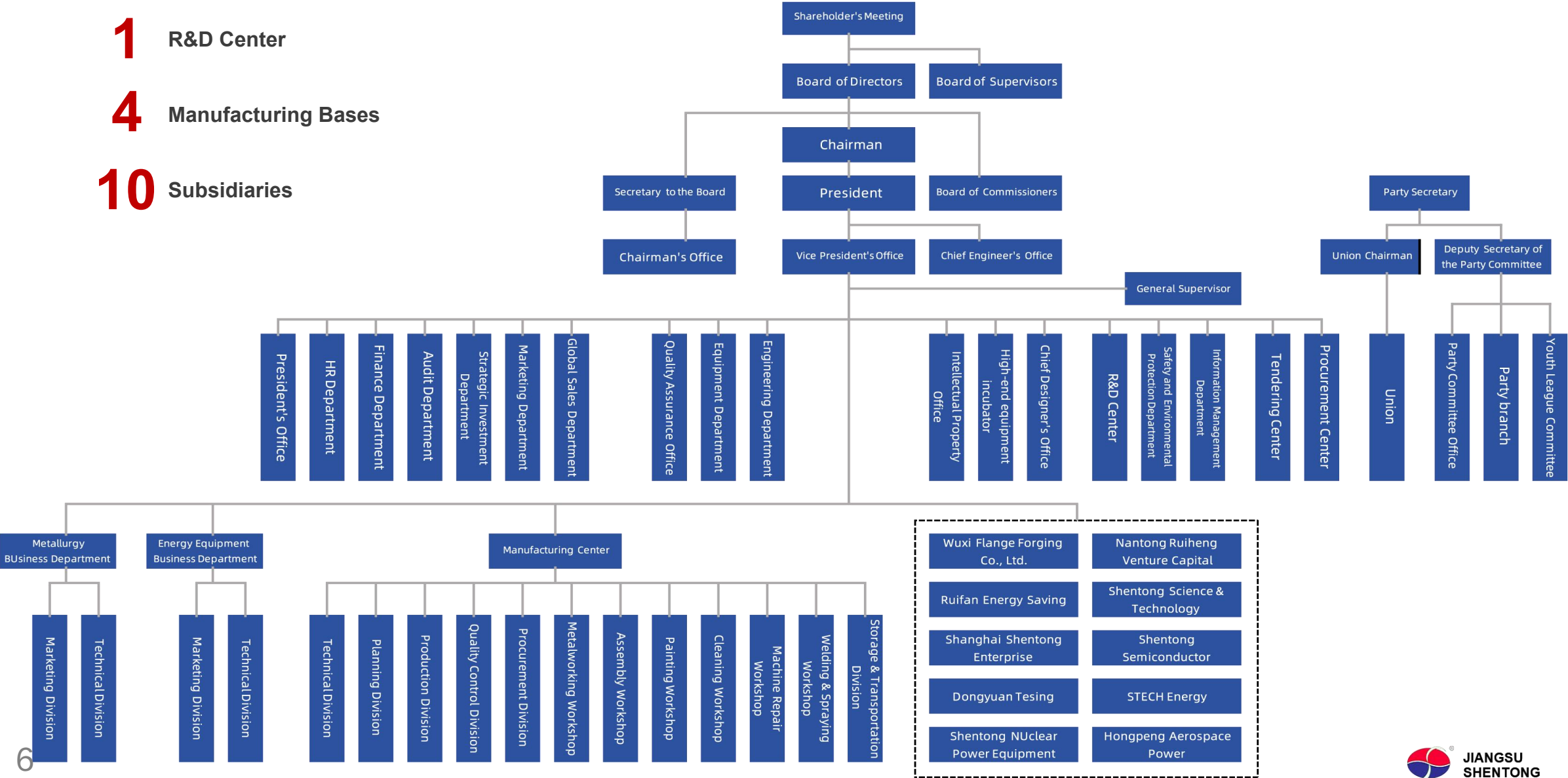
Maturity Phase

2010 ~

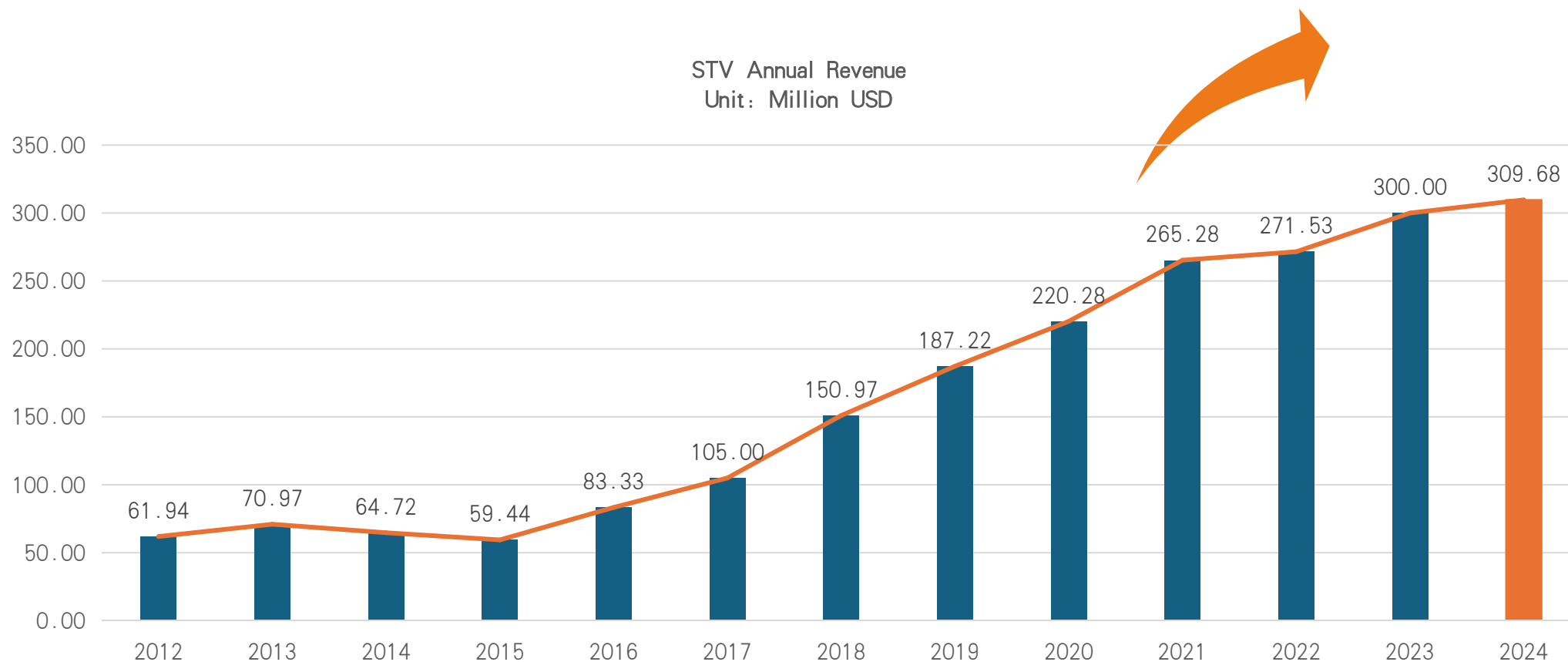
Expansion Phase

1.3 Organization Chart

- 1 R&D Center
- 4 Manufacturing Bases
- 10 Subsidiaries



1.4 Annual Revenues overview





STV pursues zero injury, asset damage and adverse impact to the environment.

- Cleaner Production
- Zero Pollution Incident
- Zero Occupational Disease



1.6 Corporation ESG

Employee Education

- Regular skills competitions and training programs to enhance employee expertise and career growth.
- Ongoing safety education and training.



Engagement & Communication

- Monthly birthday gatherings to celebrate and connect with employees, while listening to their needs and suggestions.
- Regular employee representative meetings to encourage open dialogue, collect feedback, and improve company-employee relations.



Activities & Team Building

- Frequent cultural and recreational events to strengthen team spirit and enrich workplace life.



Health & Well-being

- Annual health check-ups to safeguard physical health.
- Special insurance coverage for employees in high-risk positions.
- Medical support partnerships offering fast-track treatment for serious illnesses.



Social Responsibilities

- Since 2004, we have donated over RMB 19 million to charitable causes.
- During the COVID-19 pandemic, in addition to material support, we raised and donated RMB 1.49 million.
- Ongoing contributions to support underprivileged children and migrant populations.



Next Gen Care

- We promote the culture that Shentong is a family for every employee. We organize the family day for our employees' children every year.





02 Product and Process

2.1 Manufacturing Base



Plant 1
1966
Land area: 26,600 sq.ms
Accessories & Spare parts



Plant 2
2011
Land area: 89,900 sq.ms
Nuclear valve & Equipment

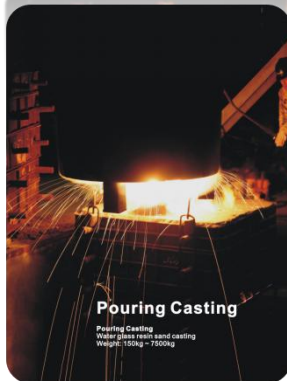
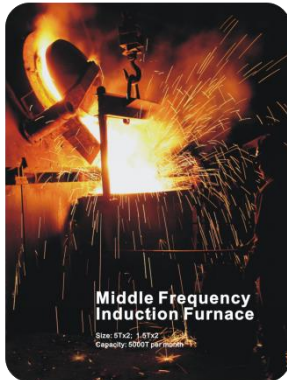


Plant 3
2016
Land area: 114,500 sq.ms
Metallurgical & Energy valve



Industrial Park (Phase I)
2025
Land area: 37,600 sq.ms

2.2 Industrial Material Division



Wax mold 3D printing



3D printing casting

Division-Foundry

Founded: 2007

Product: Sand castings

Material: CS, SS, Duplex, Super

Duplex, Other special Alloy

Cover Area: 100,000m²

Maximum Capacity: 4000 tons/year

The maximum size: is up to DN2400,

Weight: 3.5 Tons.

STV Valve quality control from the raw material process.

2.3 Industrial Material Division



Wuxi Forging Manufacture Base

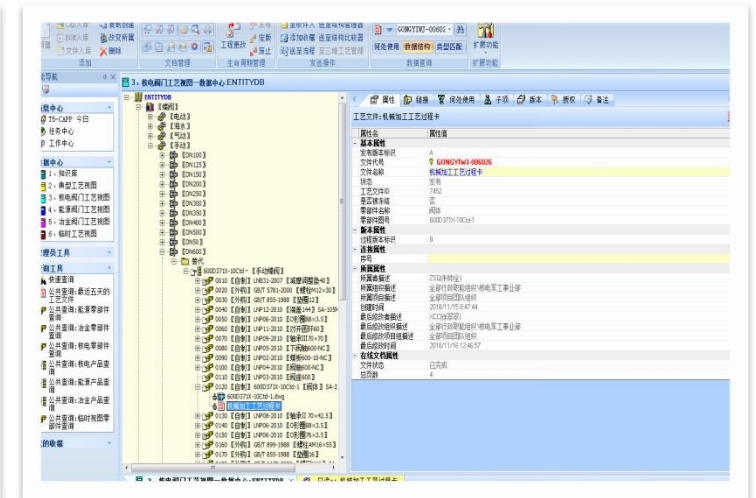
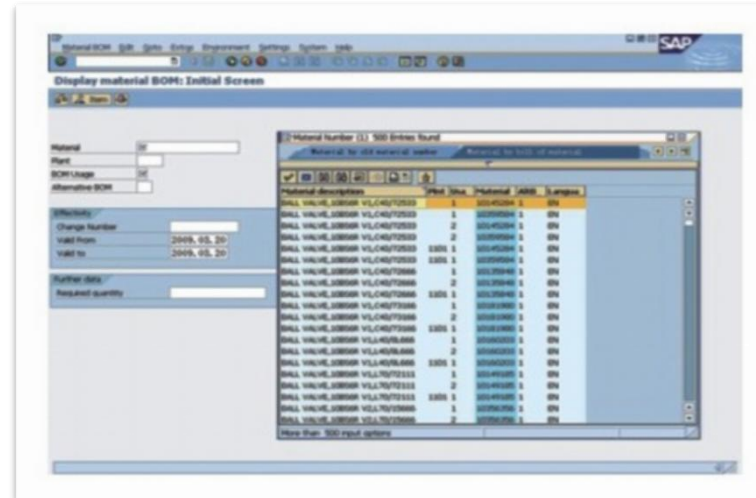
- Founded: 1984
- Product: Forging piece
- Material: CS, SS, Duplex, Super Duplex, Other special Alloy
- Land Area: 78,000m²
- Maximum Capacity: 1200 tons/year
- Maximum Size: 6 m, 30tons/piece
- 3,600-ton forging press and $\phi 6000\text{mm}$



2.4 Factory Management

Advanced SAP System

STV adopts advanced SAP System to manage resources of all factories, it aims to further improve the factory management and improves efficiency.



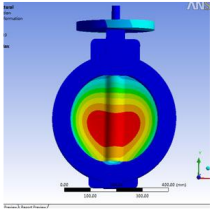
Automated Warehouse System

The use of automated warehouse has greatly increased the automation and accuracy of management.



2.5 Production and Quality Process Control

Production Process



设计/ Design

- Fluid analysis (CFD)
- Finite element Analysis (FEA)
- Thermal and stress analysis



铸造/ Casting

- Casting
- Forging
- Carbon, stainless, duplex and alloy steel



机加/ Machining

- Machining center
- Vertical lathe
- CNC boring & milling machine
- Spherical grinding machine



装配/ Assembly

- Ball valve assembly workshop
- Butterfly valve assembly workshop
- Metallurgical valve assembly workshop



测试/ Testing

- Hydrostatic testing
- High-pressure gas testing



油漆/ Painting

- Sandblasting / Shot Blasting
- Spray Coating / Painting



仓储/ Storage

- Packaging
- Shipping

Quality Control



Ultrasonic Testing UT



Radiographic Testing RT



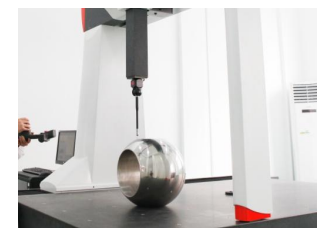
Magnetic Particle Testing MT



Liquid Penetrant Testing PT

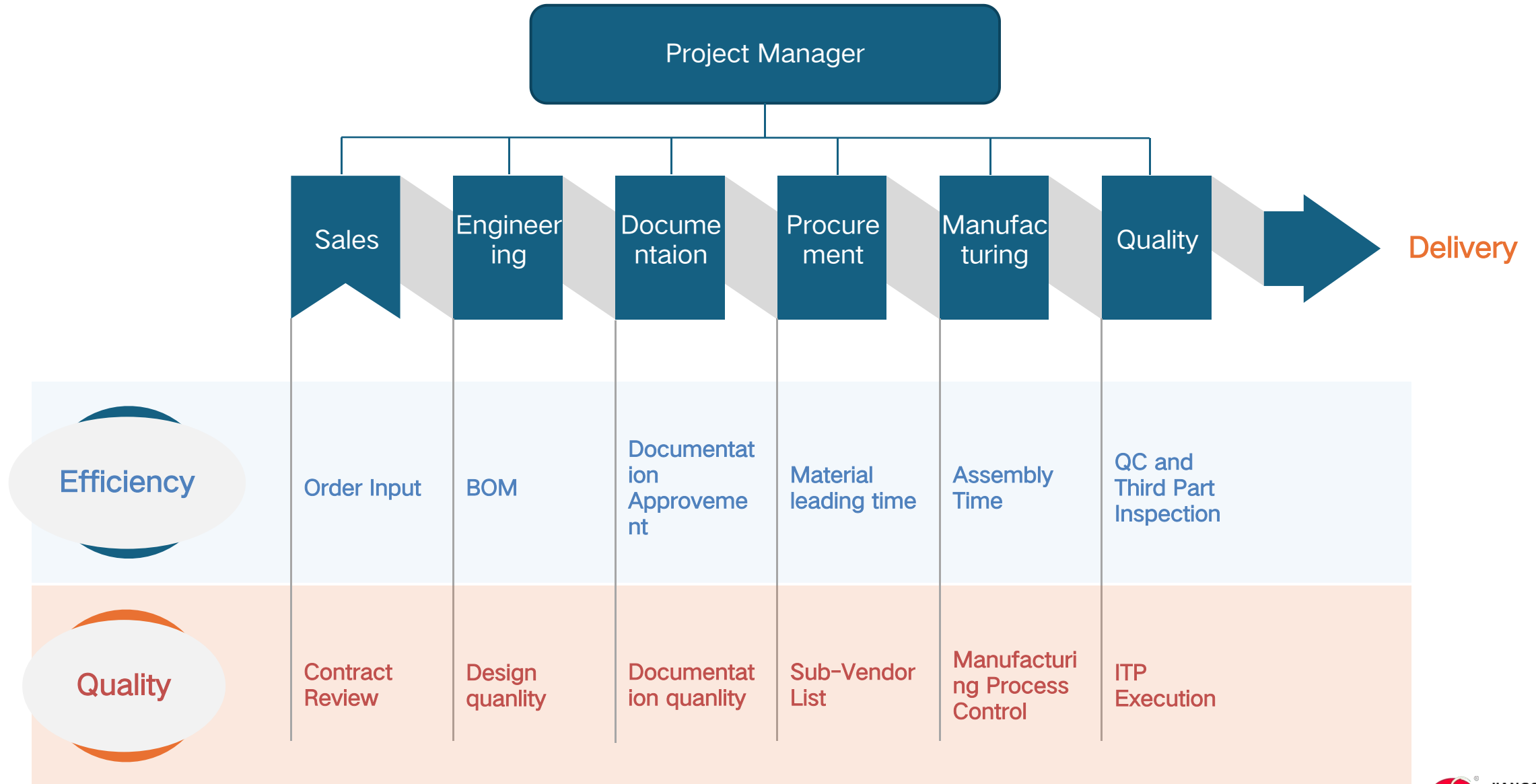


Positive Material Identification PMI



Coordinate Measuring Machine (CMM) Inspection

2.6 Project Management



2.7 Quality Certificates

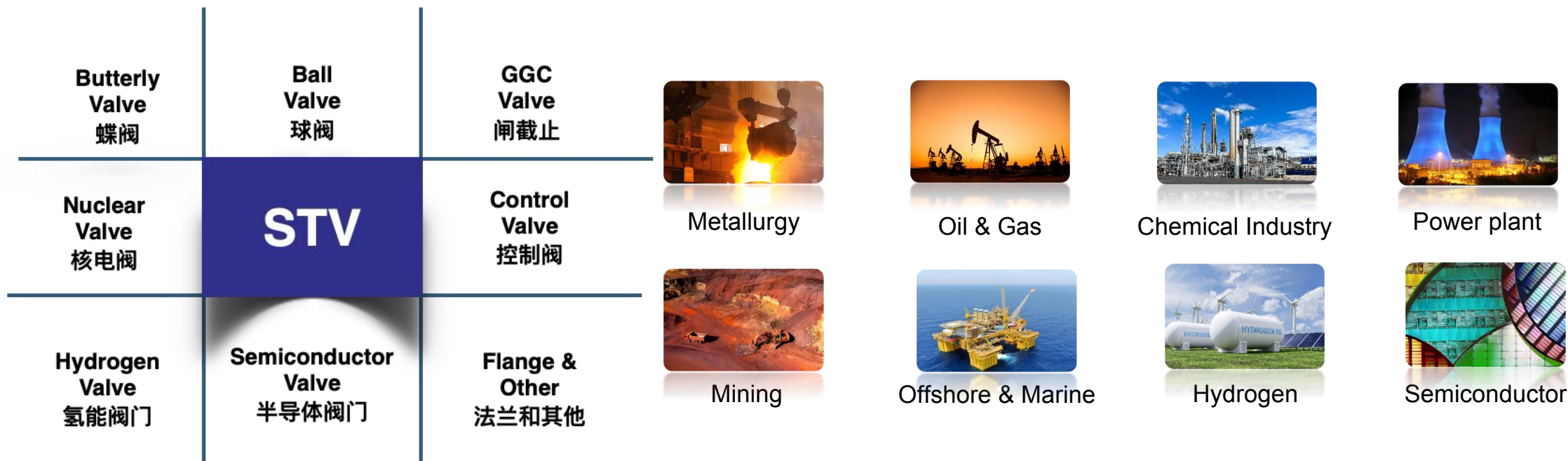
- Accreditation list:
- APIQ1 For Oil and Gas industry quality management system, issued by API
- ISO 9001-2008 Issued by CNAS
- ISO 14001-2015 Issued by CNAS
- OHSAS 18001-2007 Issued by CNAS
- API 6D For pipeline valve, issued by API
- API 609 For API609 Valve, issued by API
- API600 For ASME Gate Valve
- API607 Fire Safe Test, Issued by TUV
- API608 For metal Ball valve, issued by API
- ISO15848 Issued by TUV
- API591 Issued by TUV
- ABS For Marine Valve, issued by ABS
- DNV For Marine Valve, issued by DNV
- CCS For marine valve, issued by CCS
- CE-PED EU Pressure Equipment Directive, Issued By TUV
- TS China manufacture license of special equipment
- Civil Nuclear Safety Design License & Manufacturing License, Issued by NNSA
- SIL-IEC61508 SITIIAS





03 Product application

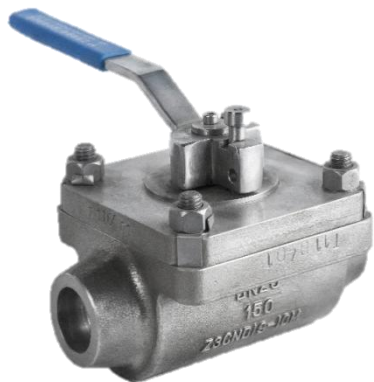
3.1 Application Fields



STV product line concentrate on both of commodity valve and high engineering valve that widely applied to Oil& Gas, Chemical, onshore/ offshore, shipbuilding, metallurgy, nuclear industrials etc.

Currently, the largest butterfly valve in China is designed and manufactured by our company and is used in the waste heat recovery system of Shagang blast furnace;

3.2 Nuclear Safety Class Product- Ball Valve



公称尺寸: DN8~DN500

Nominal size: DN8-DN500

公称压力: ≤Class1500

Nominal pressure: ≤ Class1500

核安全级别: 1、2、3级

Nuclear safety class: Class 1, 2 and 3

驱动方式: 手动/电动/气动

Drive mode: Manual/electric/pneumatic

结构形式: 上装式/两段式

Structure: Top-mounted / two-stage

使用温度: ≤320℃

Operating temperature: ≤ 320 ° C

使用介质: 含硼水/除盐水/空气/反应堆冷却剂等

Medium used: Borated water/demineralized water/air/reactor coolant, etc.

地震加速度: 三向6g

Seismic acceleration: 6g in three directions

运行老化次数: ≤3000次

Operation aging times: ≤ 3,000 times

3.3 Nuclear Safety Class Product- Butterfly Valve



公称尺寸: DN50~DN4100

Nominal size: DN50-DN4100

公称压力: \leq Class300

Nominal pressure: \leq Class300

核安全级别: 2、3级

Nuclear safety class: Class 2 and 3

驱动方式: 手动/电动/气动

Drive mode: Manual/electric/pneumatic

结构形式: 衬胶对夹/双偏心/三偏心

Structure: Rubber lined clamp / double eccentric / three eccentric

使用温度: $\leq 320^{\circ}\text{C}$

Operating temperature: $\leq 320^{\circ}\text{C}$

使用介质: 含硼水/除盐水/海水/反应堆冷却剂等

Medium used: Borated water/demineralized water/seawater/reactor coolant, etc.

地震加速度: 三向6g

Seismic acceleration: 6g in three directions

运行老化次数: ≤ 6000 次

Operation aging times: $\leq 6,000$ times

3.4 Nuclear Safety Class Product- Instrument Valve



公称尺寸: DN6~DN25

Nominal size: DN6-DN25

公称压力: ≤Class2500

Nominal pressure: ≤ Class2500

核安全级别: 2、3级

Nuclear safety class: Class 2 and 3

产品类型: 单阀/双阀组/三阀组/五阀组

Product type: Single valve / double-valve group / three-valve group / five-valve group

密封形式: 填料/金属波纹管

Sealing type: Packing/metal bellows

使用温度: ≤370℃

Operating temperature: ≤ 370 ° C

使用介质: 含硼水/反应堆冷却剂等

Medium used: Borated water/reactor coolant, etc.

地震加速度: 三向10g

Seismic acceleration: 10g in three directions

运行老化次数: ≤3300次

Operation aging times: ≤ 3,300 times

3.5 Nuclear Safety Class Product- Check Valve



公称尺寸: DN50~DN750

Nominal size: DN50-DN750

公称压力: \leq Class300

Nominal pressure: \leq Class300

核安全级别: 2、3级

Nuclear safety class: Class 2 and 3

产品类型: 双瓣式/旋启式

Product type: Double flap/swing type

使用温度: $\leq 200^{\circ}\text{C}$

Operating temperature: $\leq 200^{\circ}\text{C}$

使用介质: 含硼水/海水/低放废液/反应堆冷却剂等

Medium used: Borated water/seawater/low-level radioactive waste liquid/reactor coolant, etc.

地震加速度: 三向6g

Seismic acceleration: 6g in three directions

运行老化次数: ≤ 1500 次

Operation aging times: $\leq 1,500$ times

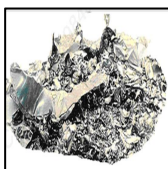
3.6 Other Product- Pit Filter



颗粒碎片
Particle
fragments



纤维碎片
Fibrous
fragments



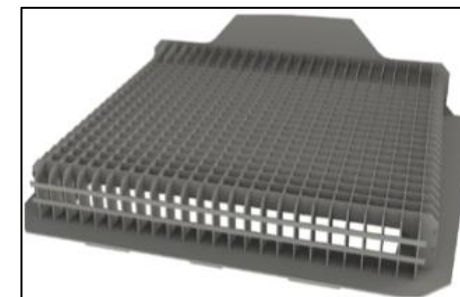
RMI碎片
RMI
fragments



其他碎片
Other
fragments

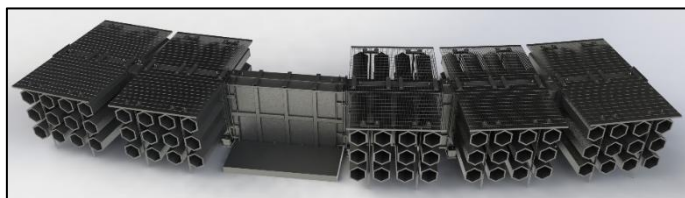
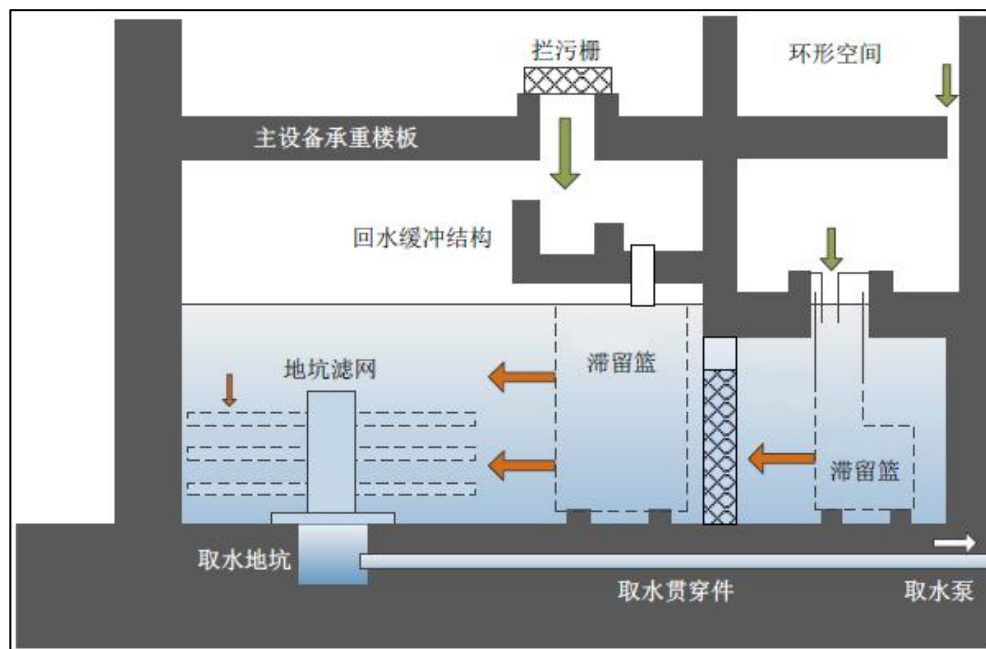


滤网过滤试验
Filter filtration test



拦污栅: 拦截100mm × 100mm以上尺寸的大型碎片

Trash rack: It intercepts large fragments with a size of 100 mm × 100 mm or more.



地坑滤网: 2.5mm的网孔, 拦截未被滞留篮完全拦截的碎片

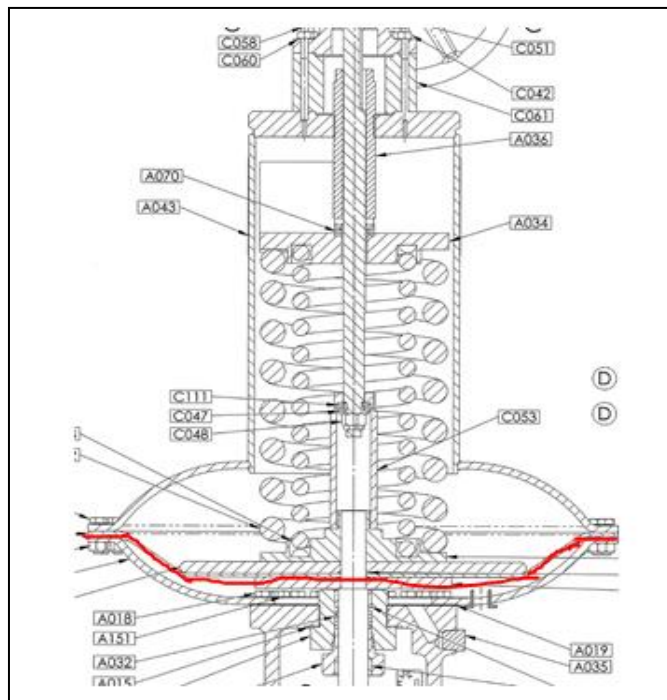
Pit filter: With 2.5 mm meshes, it intercepts fragments that are not completely intercepted by the retention basket.



滞留篮: 2.5mm的网孔, 容纳绝大多数通过拦污栅之后的碎片

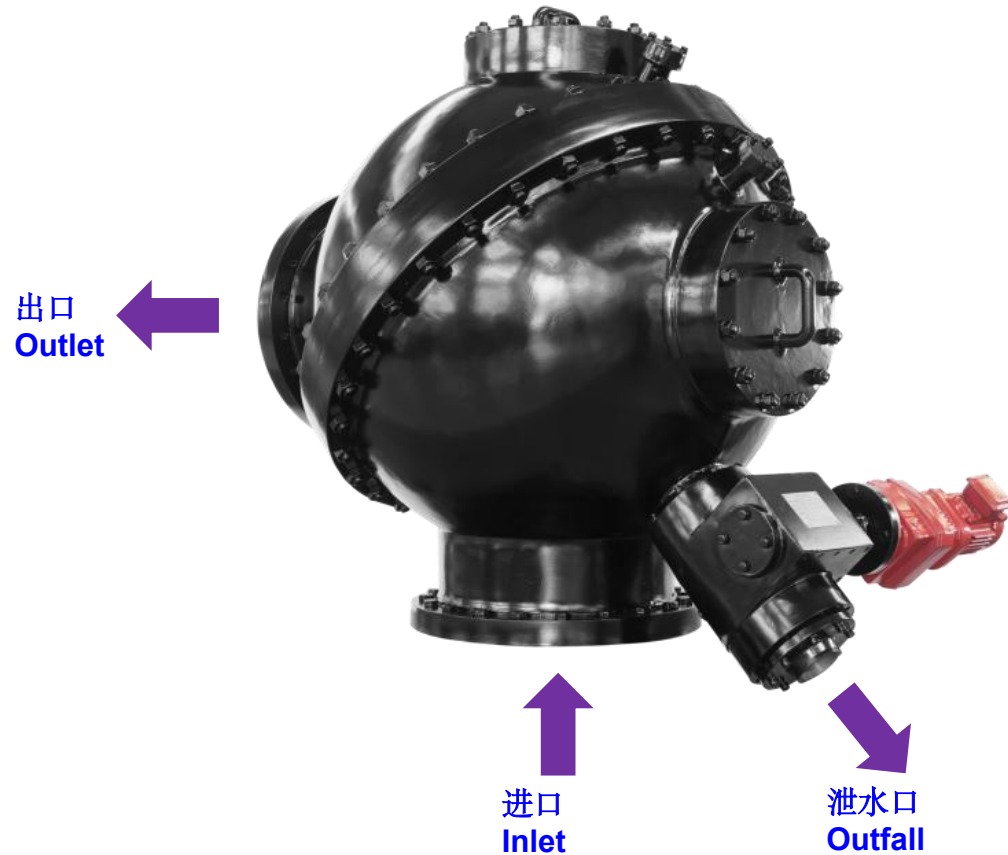
Retention basket: With 2.5 mm meshes, it accommodates most fragments that pass through the trash rack.

3.7 Pneumatic Actuator Diaphragm



- ARE/GCT系统等关键气动阀执行机构
- Key pneumatic valve actuators such as ARE/GCT system
- 屈挠疲劳: ≥ 50 万次
- Flexing fatigue: $\geq 500,000$ times
- 压缩永久变形: $\leq 25\%$
- Compression set: $\leq 25\%$
- 爆破压力: $\geq 18\text{bar}$
- Burst pressure: $\geq 18\text{bar}$
- 剥离强度: $\geq 3.5\text{kN/m}$
- Peel strength: $\geq 3.5\text{ kN/m}$
- 老化后动作次数 ($100^{\circ}\text{C}@168\text{h}$): ≥ 10 万次
- Number of operations after aging ($100^{\circ}\text{C}@168\text{h}$): $\geq 100,000$ times

3.8 Shellfish drip catcher



- 安装于安全厂房内 (SX) , 位于WCC/WES板式热交换器的进水侧。
- It is installed in the safe building (SX), located on the inlet side of the WCC/WES plate heat exchanger.
- 功能是截留流体介质中的杂物以确保热交换器正常运行, 流体经过滤网后, 杂质颗粒直径小于3mm。
- Its function is to intercept the debris in the fluid medium to ensure the normal operation of the heat exchanger. After the fluid passes through the filter, the diameter of impurity particles is less than 3 mm.
- 工作压力: 0.76MPa
- Working pressure: 0.76 MPa
- 流量: 5000m³/h
- Flow rate: 5000 m³/h
- 最大压降: ≤13kPa
- Maximum pressure drop: ≤ 13kPa
- 滤网尺寸: φ2mm
- Filter size: φ 2 mm
- 口径: DN750/DN800
- Diameter: DN750/DN800

3.9 Visual Flow Indicator



- 安装于工艺管道中，用于观察管道内介质的流动情况。
- It is installed in the process pipeline to observe the flow of medium in the pipeline.
- 适用系统: RIS/ECS/TES/SRE/RPE
- Applicable system: RIS/ECS/TES/SRE/RPE
- 适用介质: 含硼水/反应堆冷却剂/辅助水/树脂/废液/废气/除盐水
- Applicable medium: Borated water / reactor coolant / auxiliary water / resin / waste liquid / waste gas / demineralized water
- 结构形式: S8P/S8B/S8R/S6D-1/S6D-2/S8RA
- Structure: S8P/S8B/S8R/S6D-1/S6D-2/S8RA
- 工作压力: 0~2.4MPa
- Working pressure: 0-2.4 MPa
- 口径: DN15~DN100
- Diameter: DN15-DN100

4. Special Equipment for Nuclear Chemical Industry



产品库贮存井
Product warehouse
storage well



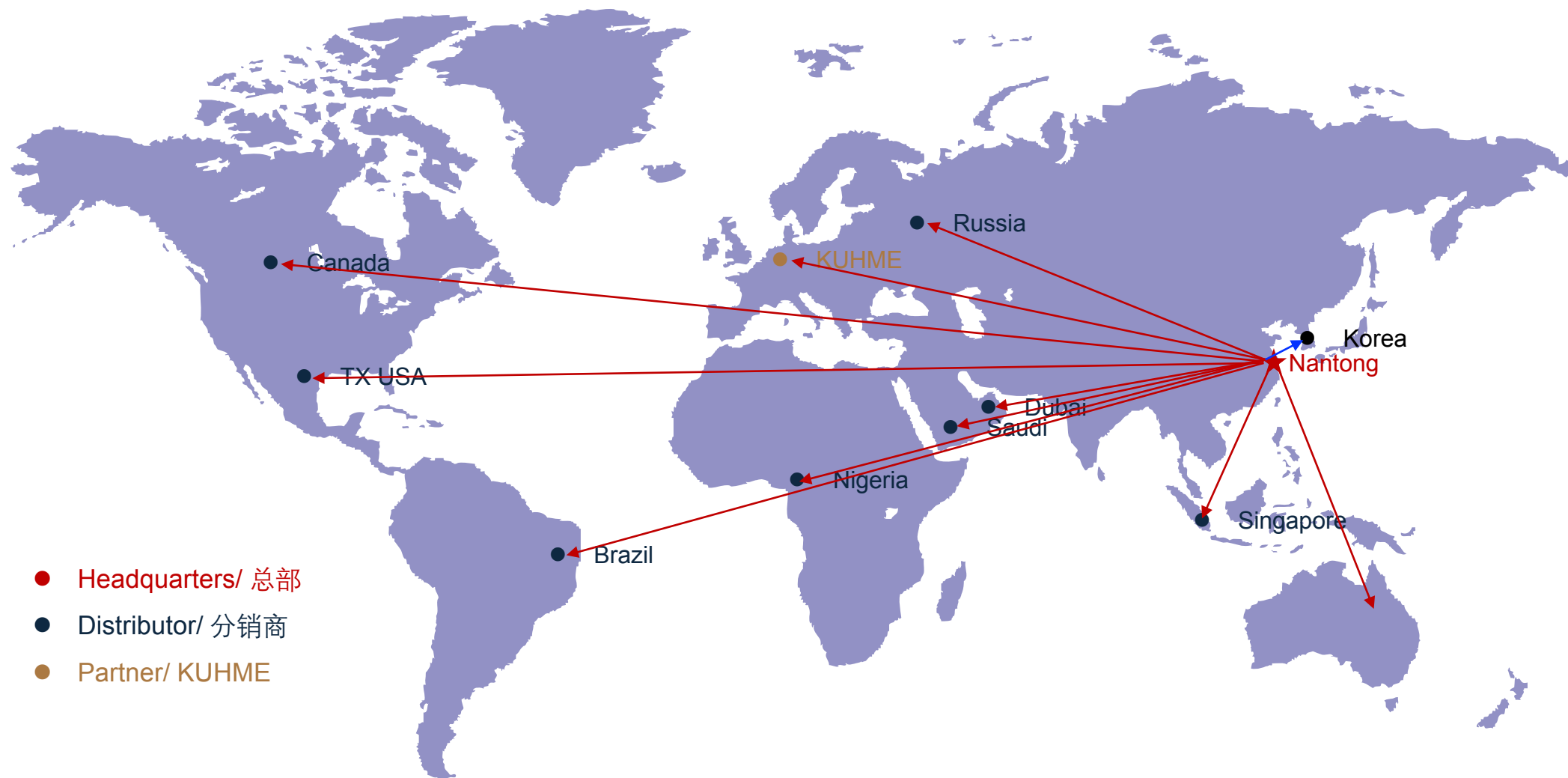
气动送样系统
Pneumatic sample feeding
system



料液循环系统
Feed liquid circulation
system

04 Sales Network & Customers

4.1 Sales Network



4.2 Supply reference- Nuclear Power Plant

No.	Project Name	End user	Project Location	Signing Year
1	K2/K3 Project Nuclear Grade 2 Ball Valve Equipment Order Contract	CZEC	Pakistan	2015
2	Fangchenggang NPP Units 3&4 LOT190Fa Nuclear Island Important Butterfly Valve Equipment Supply Contract	CNPEC	Guangxi Fangchenggang	2016
3	Fangchenggang NPP Units 3&4 LOT190Ia, Ib Nuclear Island Ball Valve Equipment Supply Contract	CNPEC	Guangxi Fangchenggang	2016
4	CENTER Project Ball Valve Procurement Package Supply Contract	NPIC	Sichuan Jiajiang	2017
5	Fujian Zhangzhou Nuclear Power Plant Units 1&2 Project Ball Valve Equipment Procurement Contract	CNPEC	Fujian Zhangzhou	2019
6	Demonstration Fast Reactor Unit 1 Nuclear Island, Conventional Island Ball Valve Procurement Contract	CNNC Longyuan Technology Co., Ltd.	Fujian Ningde	2019
7	Tianwan Nuclear Power Station Units 7&8 Butterfly Valve Equipment Supply Contract	CNPEC	Jiangsu Lianyungang	2020
8	Demonstration Fast Reactor LOT324A Nuclear Island, Conventional Island Butterfly Valve Procurement Contract	CNNC Longyuan Technology Co., Ltd.	Fujian Xiapu	2020
9	Tianwan Nuclear Power Station Units 7&8 Through-type Isolation Valve (Ball Valve) Equipment Supply Contract	CNPEC	Jiangsu Lianyungang	2020
10	Xudabao Nuclear Power Plant Units 3&4 Through-type Isolation Valve (Ball Valve) Equipment Supply Contract	CNPEC	Liaoning Xudabao	2020

4.2 Supply reference- Nuclear Power Plant

No.	Project Name	End user	Location	Year
1	Taipingling Project Units 1&2 LOT190Ia Nuclear Island Ball Valve Equipment Supply Contract	CNPEC	Guangdong Huizhou	2020
2	Hainan Changjiang Nuclear Power Plant Units 3&4 Ball Valve Equipment Procurement Contract	CNPEC	Hainan Changjiang	2021
3	Hainan Changjiang Multi-purpose Modular Small Reactor Demonstration Project Ball Valve Equipment Procurement Contract	CNPEC	Hainan Changjiang	2021
4	San'ao Project Units 1&2 LOT190Ia Nuclear Island Ball Valve Equipment Supply Contract	CNPEC	Zhejiang Cangnan	2021
5	Lufeng Project Units 5&6 LOT190Fa Nuclear Island Butterfly Valve and Ball Valve Supply Subcontract	CNPEC	Guangdong Lufeng	2021
6	Fangchenggang Project Units 5&6 LOT190Fa Nuclear Island Butterfly Valve and Ball Valve Supply Subcontract	CNPEC	Guangxi Fangchenggang	2022
7	Huaneng Shandong Shidaowan NPP Expansion Phase I Project LOT190Fa Nuclear Island Butterfly Valve and Ball Valve Supply Contract	CNPEC	Shandong Shidaowan	2023
8	Guangdong Lianjiang Nuclear Power Project Phase I PV10 Nuclear Grade 2/3 Ball Valve Equipment Supply Contract	SNPEC	Guangdong Zhanjiang	2023
9	Bailong Nuclear Power Project Phase I PV10 Nuclear Grade 2/3 Ball Valve Equipment Supply Contract	SNPEC	Guangxi Bailong	2024
10	Haiyang Nuclear Power Project Phase III PV10 Nuclear Grade 2/3 Ball Valve Equipment Supply Contract	SNPEC	Shandong Haiyang	2024

4.3 Customers reference



4.4 Business Strength



诚信创新，争先向善
Integrity and Innovation, Striving for Excellence and Goodness



Thank you for your attention!